

# For Lease

# 1530 Hilton Head, El Cajon, CA 92019



## 7,149 RSF

For more information contact:

**Robbie Cornell**  
robbie@tollercornell.com  
CA Lic # 01702034

**Mick Toller**  
mick@tollercornell.com  
CA Lic # 01355557

# 619-456-2380



**TOLLER CORNELL**  
COMMERCIAL REAL ESTATE

The information contained herein has been obtained from sources we deem reliable. While we have no reason to doubt its accuracy, we do no guarantee it

# For Lease

# 1530 Hilton Head, El Cajon, CA 92019



## Property Features:

- Only Class A quality office building in the area
- High image lobby area, common area and exterior landscaping
- Retail / restaurant amenities within walking distance and short drive
- Rancho San Diego location
- Elevator served
- Fiber to the building provided by AT&T and COX Communication

For more information contact:

**Robbie Cornell**  
robbie@tollercornell.com  
CA Lic # 01702034

**Mick Toller**  
mick@tollercornell.com  
CA Lic # 01355557

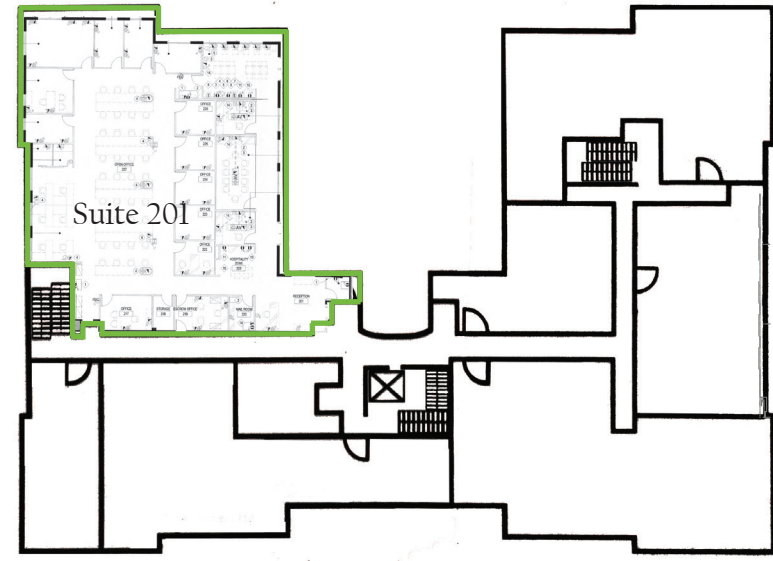
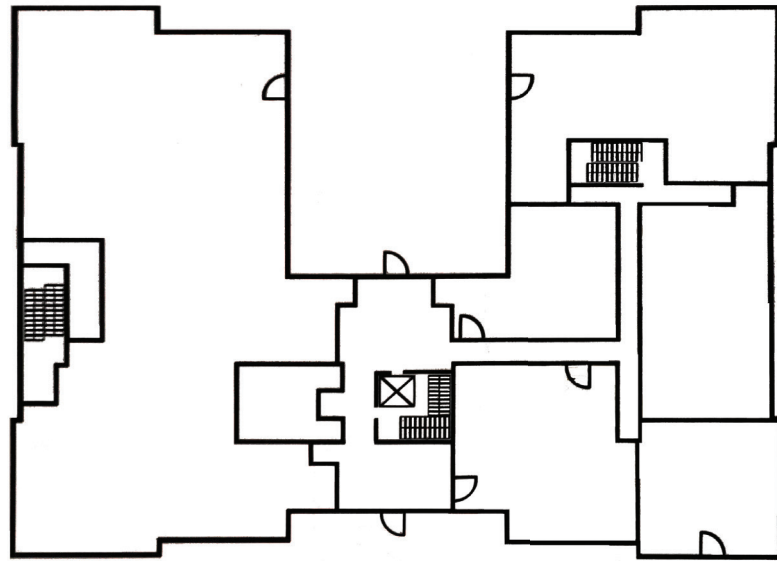
# 619-456-2380



**TOLLER CORNELL**  
COMMERCIAL REAL ESTATE

# For Lease

# 1530 Hilton Head, El Cajon, CA 92019



Suite 201 - 7,149 SF

Private offices, window-lined, kitchen, open work space, tall/open ceiling, 2 private balconies

\$2.75 NNN + E

For more information contact:

Robbie Cornell  
robbie@tollercornell.com  
CA Lic # 01702034

Mick Toller  
mick@tollercornell.com  
CA Lic # 01355557

# 619-456-2380



**TOLLER CORNELL**  
COMMERCIAL REAL ESTATE

# For Lease

# 1530 Hilton Head, El Cajon, CA 92019



For more information contact:

**Robbie Cornell**  
robbie@tollercornell.com  
CA Lic # 01702034

**Mick Toller**  
mick@tollercornell.com  
CA Lic # 01355557

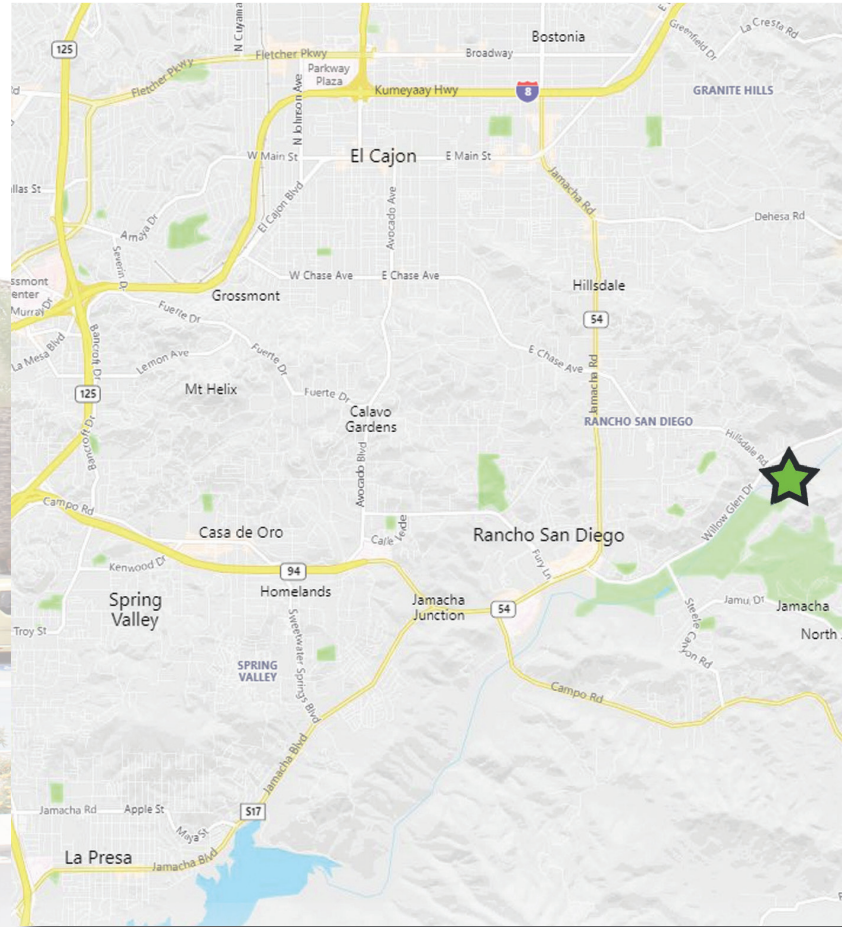
# 619-456-2380



**TOLLER CORNELL**  
COMMERCIAL REAL ESTATE

# For Lease

# 1530 Hilton Head, El Cajon, CA 92019



For more information contact:

**Robbie Cornell**  
robbie@tollercornell.com  
CA Lic # 01702034

**Mick Toller**  
mick@tollercornell.com  
CA Lic # 01355557

## 619-456-2380



**TOLLER CORNELL**  
COMMERCIAL REAL ESTATE